



Producer: **Copeland**

Line: **ZB**

Model: **ZB95K5E-TFD**

Cooling capacity [kW]: **20.79**

Displacement [m³/h]: **36.4**

Refrigerant: **R134a, R404A, R407A, R407C, R407F, R448A, R449A**

Capacity control: **None**

Power supply: **400V/3Ph/50Hz**

Data

Technical data

Displacement	[m ³ /h]	36.4
Oil charge	[l]	3.37
Oil type		POE RL32-3MAF
Internal free volume	[dm ³]	14.0
Net weight	[kg]	64.90

Electrical data and limits

Power supply		400V/3Ph/50Hz
Maximum continuous current	[A]	28.2
Locked rotor amperage	[A]	140.0
Motor resistance main	[Ω]	1.09
Maximum suction pressure	[bar]	22.6
Maximum discharge pressure	[bar]	32.0

Dimensions

Suction connection thread diameter	[inch]	1 3/4
Discharge connection thread diameter	[inch]	1 1/4
Length	[mm]	280
Height	[mm]	552
Width	[mm]	280

Other

Approved refrigerants	R134a, R404A, R407A, R407C, R407F, R448A, R449A
Allowed oil types	POE RL32-3MAF, POE MOBIL EAL Arctic 22 CC
Capacity control	None
Protection rating	IP54 (IEC34)

Performance

Nominal conditions: refrigerant: R404A, evaporation: -10°C (dew point), condensation: 45°C (dew point), superheating: 10K, subcooling: 0°C

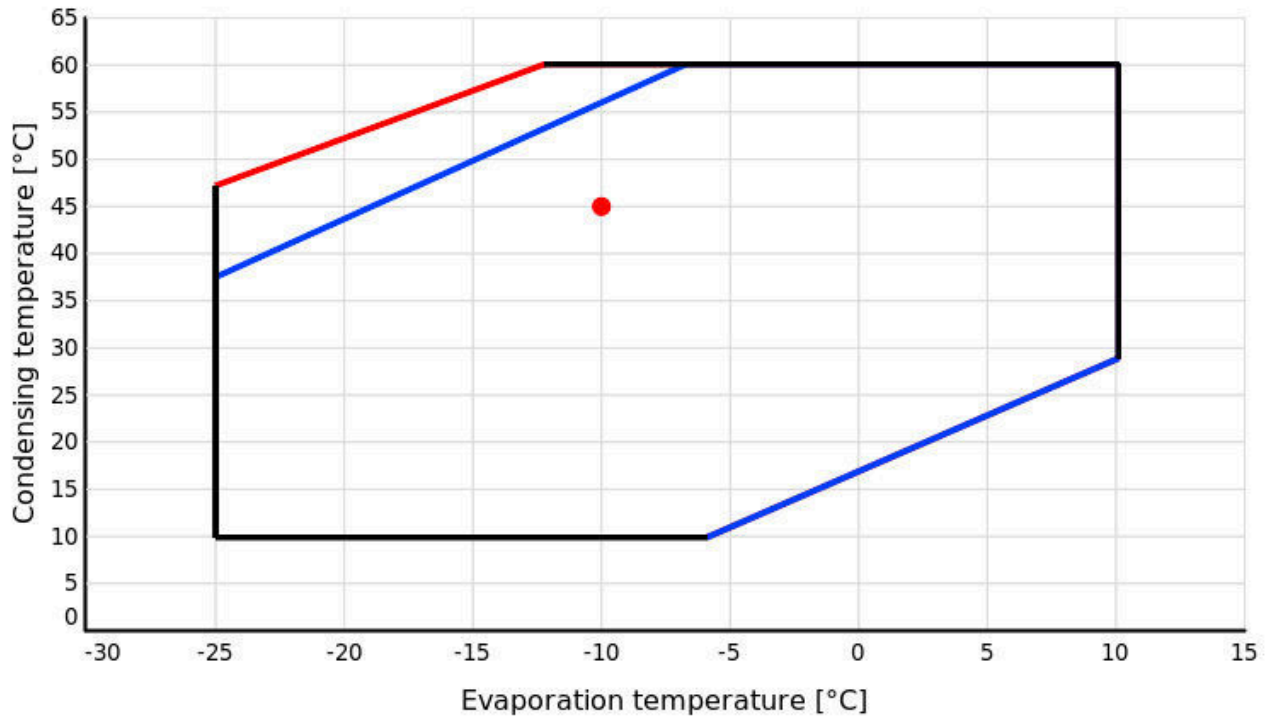
Cooling capacity

		Evaporation temperature [°C]								
		-25	-20	-15	-10	-5	0	5	7	10
Condensation temperature [°C]	9.9	18.28	22.53	27.67	33.87					
	10	18.26	22.51	27.64	33.83					
	15	17.31	21.40	26.26	32.06	38.97				
	20	16.30	20.26	24.89	30.35	36.80	44.41			
	25	15.19	19.06	23.48	28.63	34.67	41.77	50.06		
	30	13.91	17.73	21.99	26.87	32.54	39.15	46.87	50.30	55.83
	35	12.42	16.23	20.36	25.01	30.34	36.52	43.70	46.89	52.05
	40	10.66	14.51	18.55	23.00	28.03	33.80	40.50	43.47	48.27
	45	8.56	12.51	16.51	20.79	25.55	30.97	37.20	39.97	44.44
	50		10.17	14.17	18.33	22.86	27.95	33.77	36.34	40.51
	55			11.50	15.58	19.91	24.70	30.14	32.54	36.43
	60				12.48	16.64	21.17	26.27	28.51	32.14
60.1				12.41	16.58	21.10	26.19	28.43	32.05	

Power consumption

		Evaporation temperature [°C]								
		-25	-20	-15	-10	-5	0	5	7	10
Condensation temperature [°C]	9.9	4.63	4.78	4.95	5.12					
	10	4.64	4.79	4.96	5.13					
	15	5.15	5.29	5.45	5.62	5.78				
	20	5.75	5.86	6.01	6.17	6.33	6.47			
	25	6.44	6.53	6.65	6.80	6.95	7.09	7.19		
	30	7.25	7.30	7.40	7.53	7.66	7.79	7.90	7.93	7.96
	35	8.18	8.19	8.26	8.36	8.48	8.59	8.69	8.72	8.75
	40	9.27	9.23	9.25	9.32	9.41	9.51	9.59	9.62	9.65
	45	10.51	10.42	10.40	10.43	10.49	10.56	10.62	10.64	10.67
	50		11.79	11.72	11.70	11.72	11.76	11.80	11.81	11.82
	55			13.22	13.15	13.12	13.12	13.13	13.13	13.13
	60				14.79	14.71	14.67	14.64	14.63	14.61
60.1				14.83	14.75	14.70	14.67	14.66	14.64	

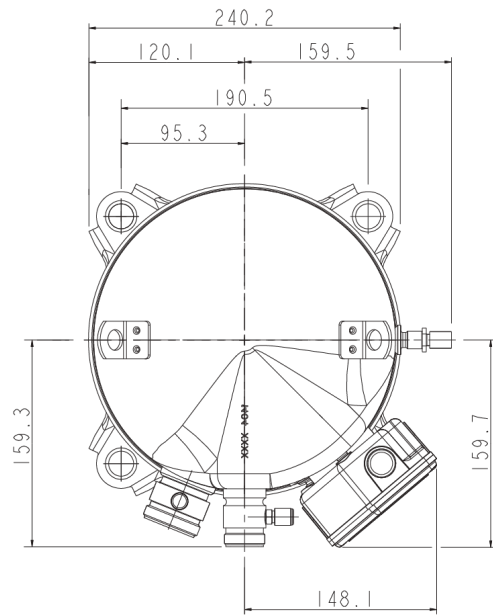
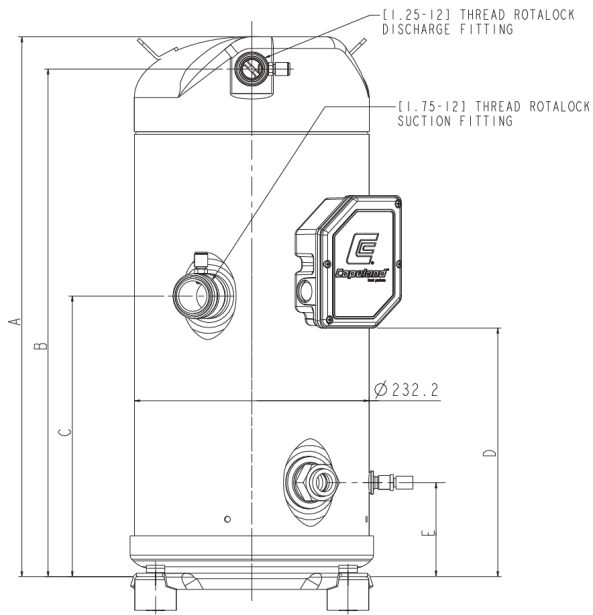
Application range



Legend

- Suction gas superheating: 10 K
- Suction gas temperature: 20°C

Dimensions



Dimensions

Dimension A	[mm]	551,5
Dimension B	[mm]	519,5
Dimension C	[mm]	295
Dimension D	[mm]	263,3
Dimension E	[mm]	93